



EGLV

Emschergenossenschaft



Raiffeisen Hunsrück

Handelsgesellschaft mbH

Rhein-Hunsrück-Nahe

Wir versorgen die Region

Interreg 
North-West Europe
Phos4You
European Regional Development Fund

Trials with EuPhoRe-ash at a fertiliser mixing plant

Phos4You final conference, 22.-23.09.2021

Daniel Klein, Emschergenossenschaft

in cooperation with S. Klose (EuPhoRe GmbH) and Raiffeisen Hunsrück

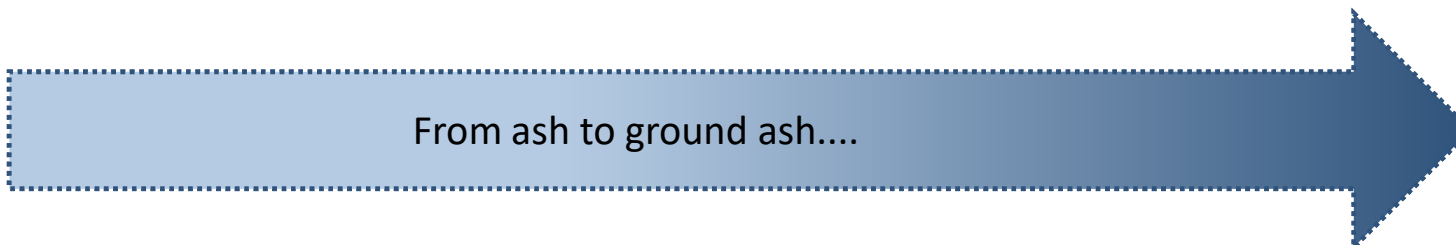
Background



L. Pamuk / Emschergenossenschaft



Source: Lösche GmbH



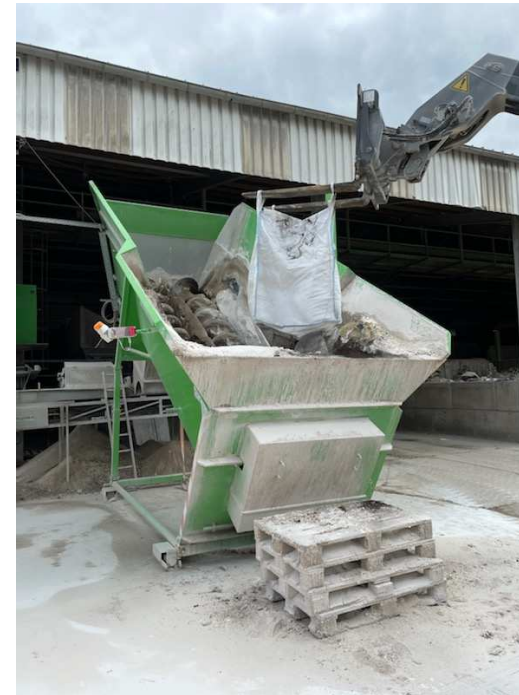
Background

...to lab-scale granulation (high end)



Source: Eirich GmbH

...to full-scale fertiliser mixing trials (low end)



S. Klose / EuPhoRe GmbH

Fertiliser mixing at Raiffeisen Hunsrück



S. Klose / EuPhoRe GmbH

- Goal: Mixing of a PK-fertiliser, using EuPhoRe-ash
- Input:
 - 1) *EuPhoRe-ash, finely ground to 90% <0,063 mm (approx. 450 kg)*
 - 2) *Potassium sulfate (K, S) with 10% glycerin*
 - 3) *Calcium carbonate*
- Duration of mixing process: 4 mins
- Product:

**PK-fertiliser with S, Mg and Ca
13-13 (+3+1+24)**

Thank you for your attention

